

BARRONGLASS

enlightened innovation

PLEASE NOTE

The colour reproduction in this brochure is not accurate, and therefore we recommend that you ask for sample before you purchase to ensure that you are happy with final product.

Welcome to Barron Glass - enlightened innovation

Barron Glass specialises in the manufacture of decorative glass products and period doors. During the last 20 years the business has established itself as the leading supplier of Victorian glass designs to the UK and Eire markets.

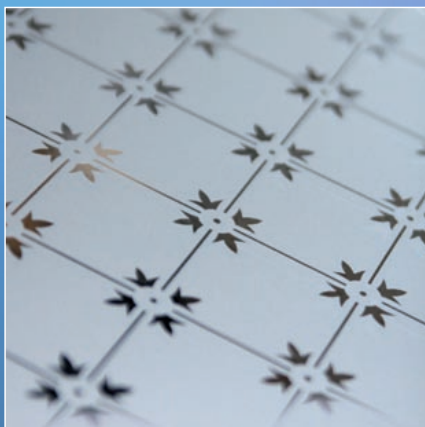
Founded in 1988, Barron Glass quickly gained a strong reputation in this specialist market by developing innovative manufacturing processes and launching a range of exciting new products.

Customers include glass shops, kitchen manufacturers, architects, interior designers, private individuals etc.

Whether you need a single pane of glass or doors for an entire property, Barron Glass aims to provide a quality product that you will be delighted with.

Profile - Michael Barron MD

Michael Barron has over 20-years of experience in manufacturing, operations and sales. With a dedicated team of specialist staff, he oversees every aspect of the design, development and production process.



Innovation

The method of producing “etch” enamel glass was developed and patented in 1805 by John Davenport. In 1988, Barron Glass set out to revive this process of decorating sheet glass. This involved developing a technique of kiln firing the glass which enabled large sheets of glass to be decorated. Importantly, this unique process maintained the flatness of the glass whilst applying extraordinary high levels of colour consistency.

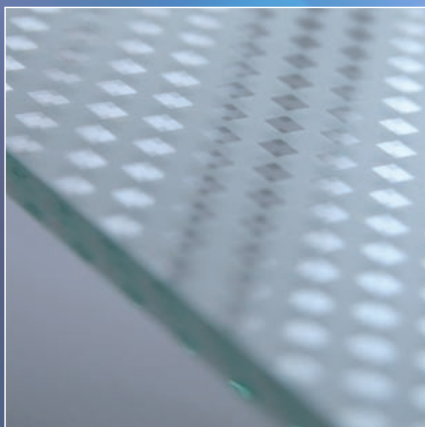
Propriety Technology

With this patented process, Barron Glass was able to produce an unrivalled selection of decorated period glass and became the principal supplier in the UK.

The company's expertise manifests itself in products that truly enhance the benefits of incorporating glass into contemporary and traditional interior design projects.

Barron Glass is committed to the continual search for new and innovative glass products.

bright · artful · skillful · imaginative



Traditional Designs

The traditional glass patterns, illustrated opposite, are available in sheet sizes up to 1120 x 2140 mm in 4mm thickness. Laminated sheets in 5mm and 7mm thickness are available to provide safety glass for doors and low-height windows.

All patterns can be cut to size as required.

All designs can be produced in an opaque form for privacy in bathrooms etc. This involves laminating a plain etch sheet to each of the patterned glass panes.

Fleur de lys, Fleur, Star, Trellis, Gothic and Empress

These designs have an etched surface with a clear design.

Double Fleur

This pattern is a double "etch" opaque glass that provides the best standard option for privacy.

Victorian

A design based on leaded glass of the late Victorian Period. The pattern is outlined in solid black enamel and shaded with Blue and Green enamels, Amber silver stain and Glass Etch.

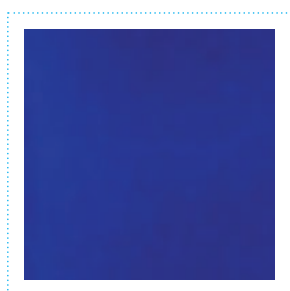
The design may be cut to size and used as is, or cut into its constituent squares and leaded together to produce leaded lights. The distance between the black lines separating each square is 102mm (4").

Gothic

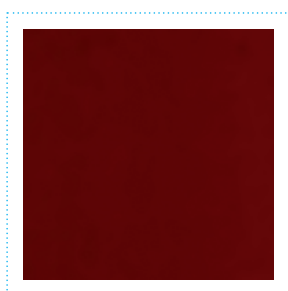
This pattern is faithfully reproduced from Pugin's original design circa 1840. The pattern is available in combinations of Etch-Blue, Etch-Green, Etch-Amber or plain Etch.

Solid Colours

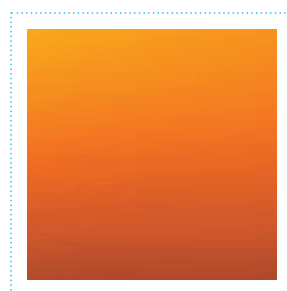
There are two solid 'pot' colours, Cobalt Blue and Ruby, so called as they are produced from a molten pot of solid coloured glass. These are available in 3mm thickness or in laminated form. Flashed Amber glass, manufactured using kiln-fired silver oxide in our factory, is available in 4mm and laminated form.



Cobalt Blue



Ruby



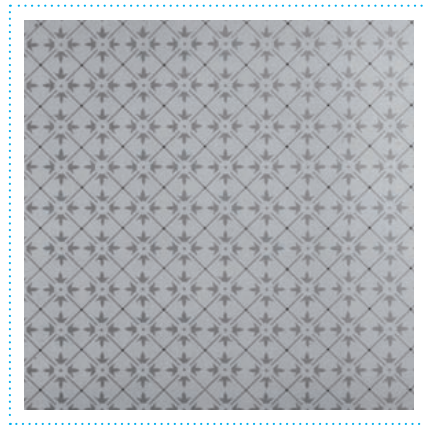
Flashed Amber



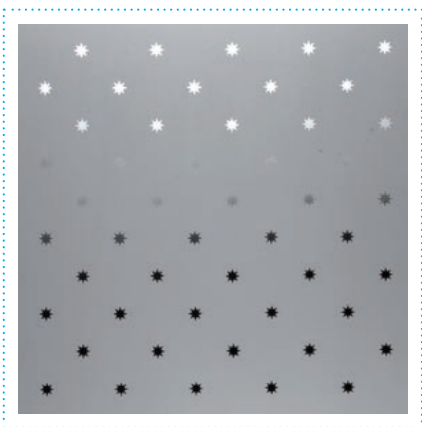
Fleur



Fleur De Lys



Double Fleur



Star



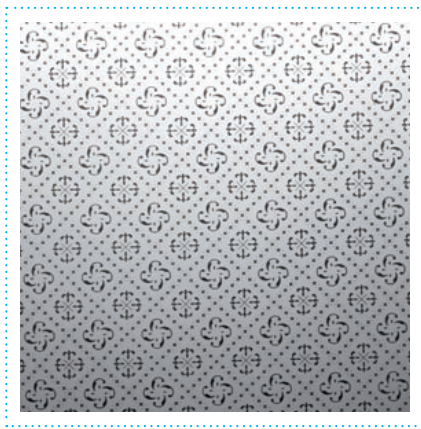
Victorian



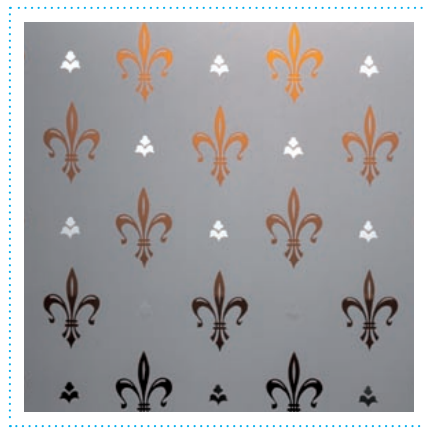
Trellis



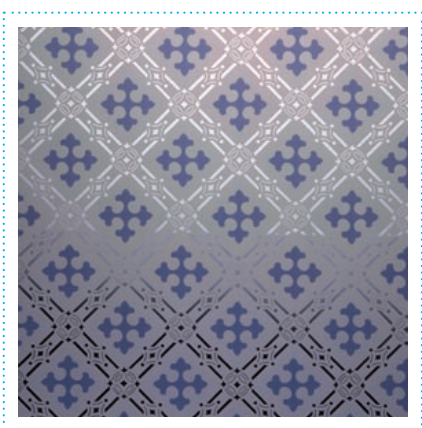
Gothic



Empress



Amber Fleur De Lys



Gothic Blue



Gothic Green

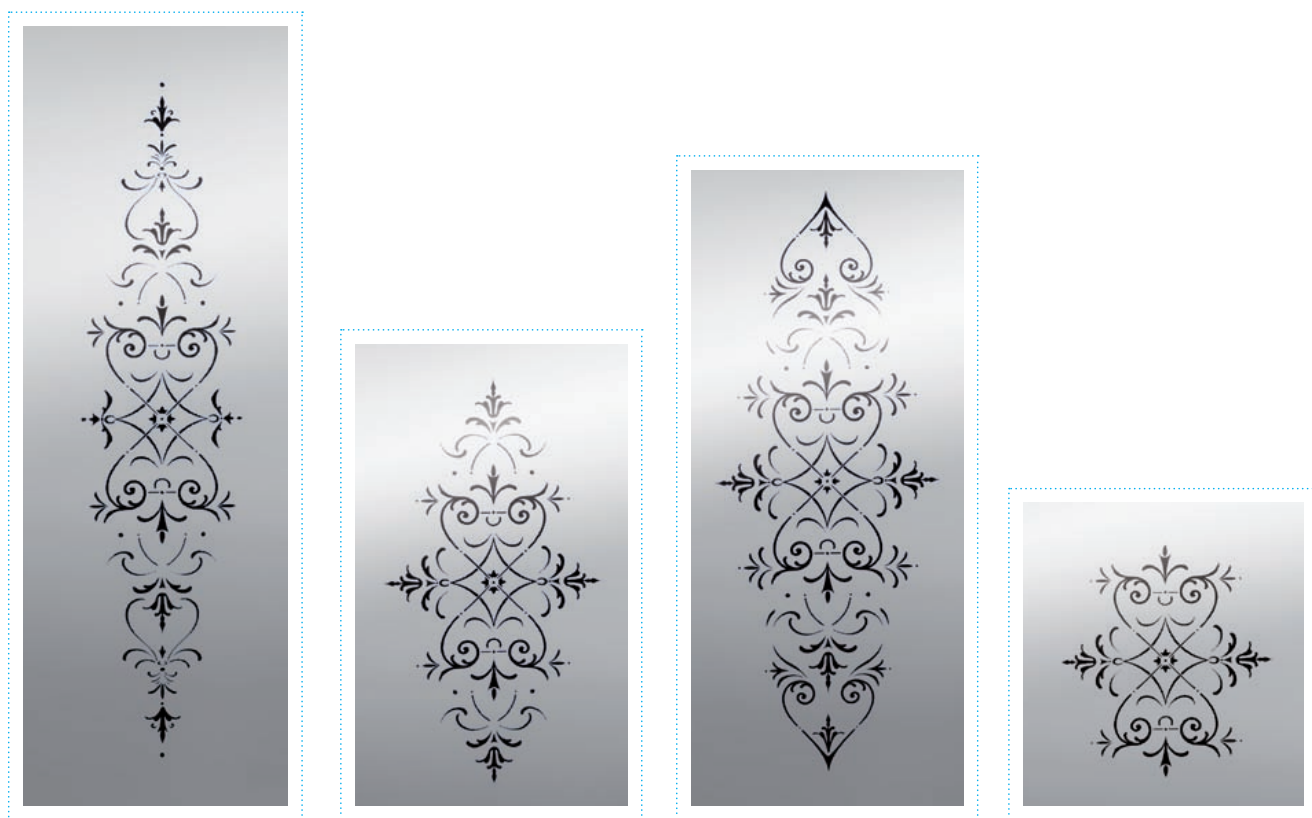


Gothic Amber

Feature Designs

The Regent

This design is produced in various configurations, designed to suit different sized glass panels. In addition, a border of your choice can be sand blasted to these panels.



Regent A

Design Size	max. glass size
151 x 811mm	300 x 1120mm
201 x 540mm	350 x 820mm
201 x 846mm	428 x 1120mm

Regent B

Design Size	max. glass size
295 x 544mm	600 x 900mm
411 x 762mm	713 x 1120mm

Regent C

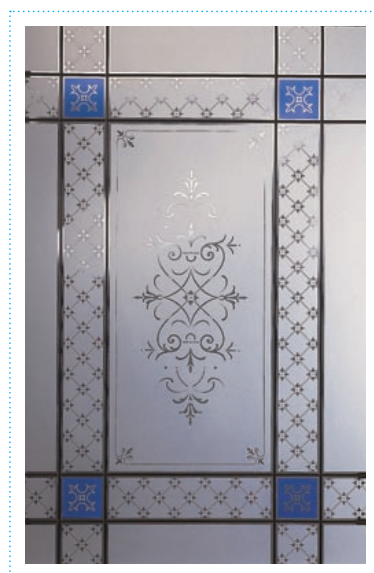
Design Size	max. glass size
450 x 1130mm	size on request

Regent D

Design Size	max. glass size
291 x 312mm	440 x 550mm

Cheltenham

The Cheltenham panel comprises an 'etch' design with blue enamelled squares at the intersection of the borders; an adhesive lead strip is applied to both sides of the glass, defining the border areas. Red and green corners may be supplied on special request.



Cheltenham

DESIGN SIZE
Design size 522 x 933mm
max. glass size 713 x 1120mm



Sidelight

DESIGN SIZE
Design size 107 x 933mm
max. glass size 395 x 1120mm

← DESIGN SIZE →

← DESIGN SIZE →

The Vase Design

The Vase designs are based on a door panel design of the 1860's. In the Fanlight the vase is removed from the centre so that a name or number may be incorporated into the panel. The designs are produced with clear detail on an etch background. The design is available with or without a border.



Vase A with border

Design Size	max. glass size
210 x 860mm	400 x 1120mm
233 x 938mm	400 x 1120mm



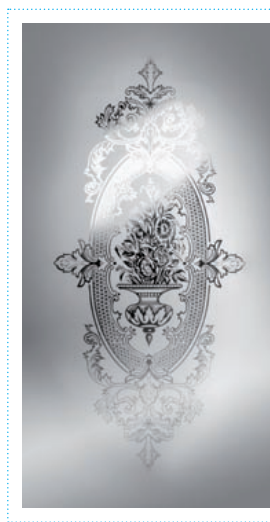
Vase A without border

Design Size	max. glass size
170 x 650mm	390 x 1120mm
183 x 711mm	390 x 1120mm



Vase B with border

Design Size	max. glass size
464 x 933mm	630 x 1120mm
550 x 936mm	713 x 1120mm



Vase B without border

Design Size	max. glass size
375 x 835mm	713 x 1120mm



Vase C

Design Size	max. glass size
301 x 570mm	500 x 810mm
405 x 764mm	700 x 1120mm
483 x 917mm	800 x 1120mm



Fanlight

In the fanlight the vase is removed from the centre so that a name or number may be incorporated into the panel.

Borders, Corners and Roundels

The range of corner squares and borders is designed to be used in nine pane style doors and border-configured windows.

Borders

The border designs are available in etch, blue enamel, amber stain and etch / amber, as shown below.

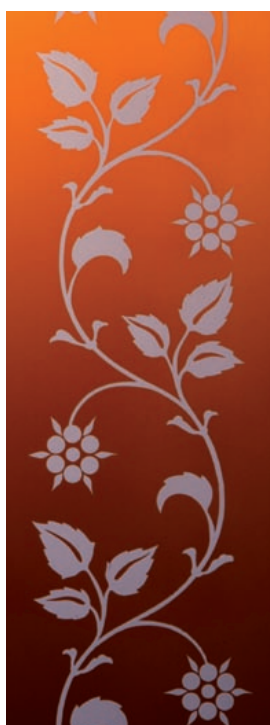
Clematis, Vine and Regency Swirl are suitable for glazing widths of 115 to 165mm. Small Vine may be used for glazing widths of 65 to 165mm. All borders are produced in 4 and 6 mm glass.



Clematis



Small Vine



Vine



Regency Swirl

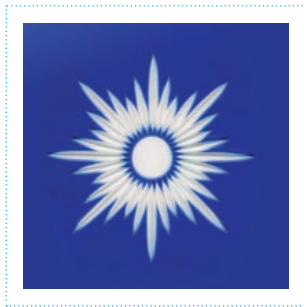


Corners

The Starburst corner design is brilliant cut onto 3mm thick handmade glass, which may also be supplied laminated for safety reasons. This design is available in cobalt blue, ruby and flashed amber glass.

The Shamrock and Garland corner designs are made using multiple layers of transparent glass enamel and supplied in 4mm thickness. They are available in blue, green, ruby and amber.

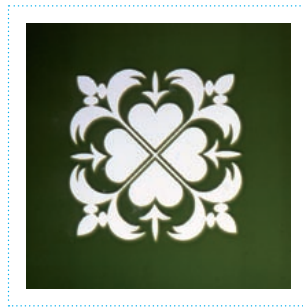
The Victorian corner is a single square taken from our Victorian pattern (any one of the four designs may be chosen). This is available in 4mm or laminated glass.



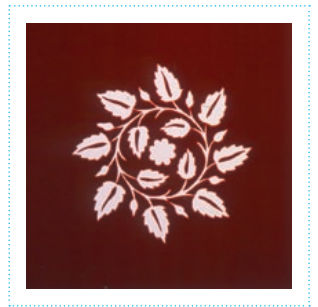
Starburst



Victorian



Shamrock



Garland

Bird Roundels

The bird roundels are produced using glass enamels and silver stain, kiln fired onto Sahara glass.

These are designed to be incorporated into traditional leaded lights. The size of the roundel is 152mm (6 inches), thickness of the glass is 3mm. These are sold either individually, in pairs or sets of four.



Bird 1



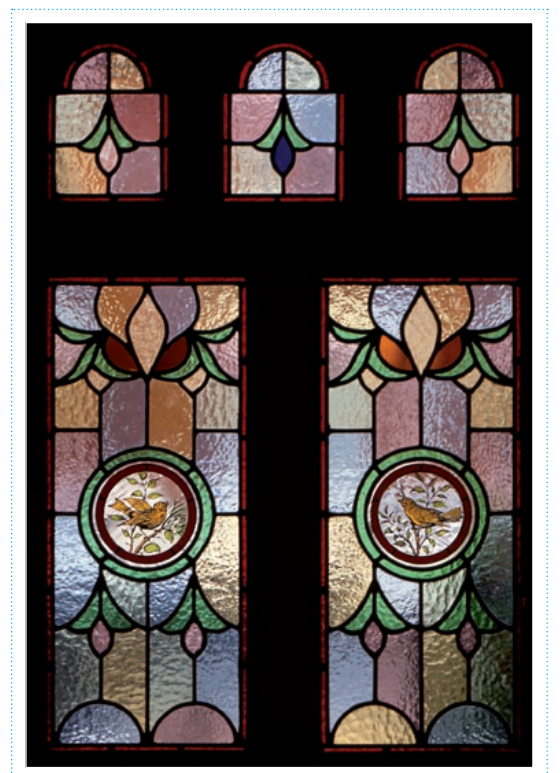
Bird 2



Bird 3



Bird 4



Bespoke Design

Barron Glass are able to supply a myriad of decorative glass colours and effects across a broad range of materials and styles within our design and production facility.

In the past we have undertaken commissions for glass balustrades, office partition screens, religious buildings and private window designs.

We can also adapt our existing designs to incorporate house names and numbers, decorative borders and so forth.

Take the time to browse our website for inspiration, alternatively, call us to discuss specific requests.

Glass Balustrade



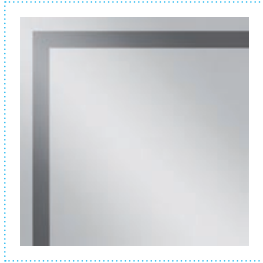
Office Partition Screen



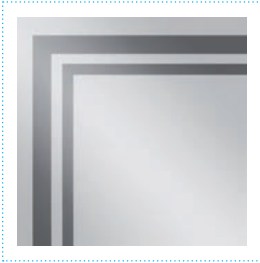
Bespoke Sandblasting

A sandblasting service is available to produce panels to your own designs.

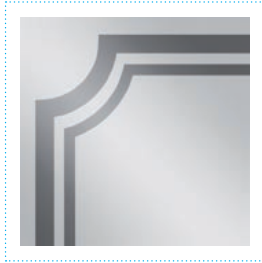
The following borders can be sand-blasted onto individual panels and combined with Feature Designs, as shown in the example below.



Single



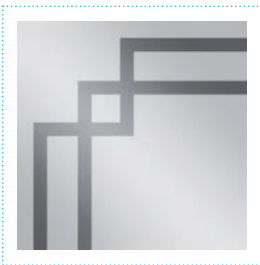
Double



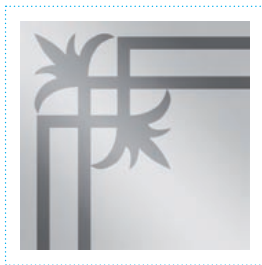
Scalloped



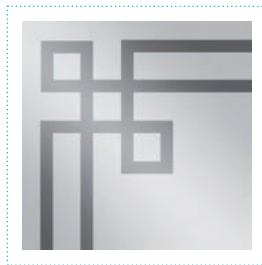
Fleur



Greek Key 1



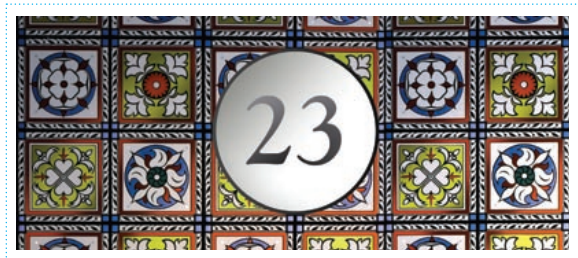
Deco



Greek Key 2



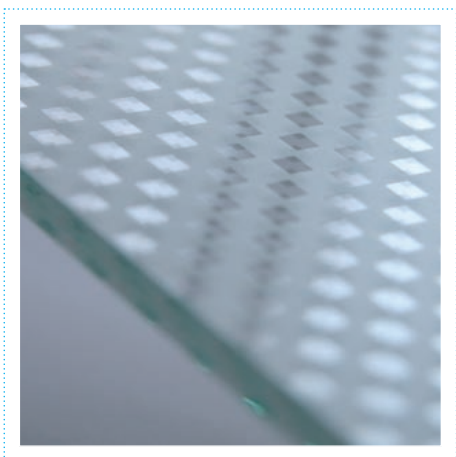
Example of bespoke sandblasting



Contemporary Design

Chequer

The squares of the Chequer design are printed off-set on two separate sheets of glass that are laminated together to a thickness of 7mm. This gives a 3 dimensional effect. Using one of these sheets in isolation gives the Single Chequer design.



Victorian Doors

The Victorian doors are constructed from solid pine with knot-free surfaces. The timber is 100% sourced from purpose grown plantations, managed in a sustainable manner.

The three door styles are designed and manufactured to specifications taken from original Victorian doors. Unlike many mass-produced doors, these internal Victorian doors are exact reproductions featuring authentic detailing and proportions. They will enhance your period property, helping to restore your home to its former glory.

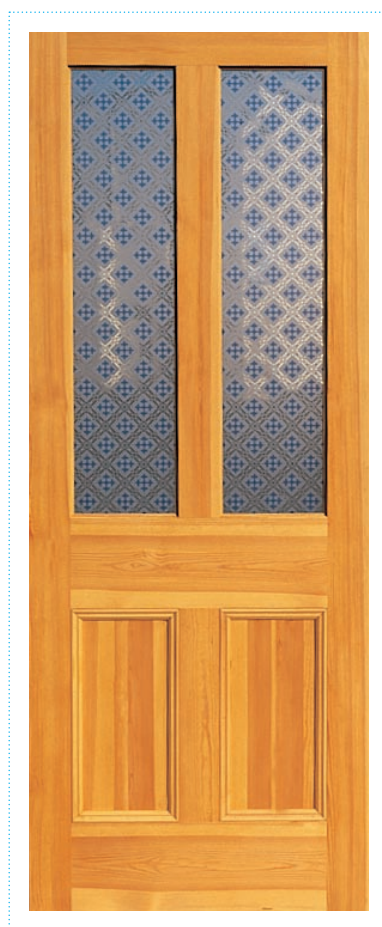
As well as looking stunning, glazed Victorian internal doors allow natural light to enter otherwise gloomy areas.

There are 3 doors styles



4 Panel Door

762 x 1981mm
685 x 1981mm
826 x 2040mm
838 x 1981mm
726 x 2040mm



2 Pane Door

762 x 1981mm
685 x 1981mm
826 x 2040mm
838 x 1981mm
726 x 2040mm



9 Pane Door

762 x 1981mm
826 x 2040mm
838 x 1981mm
726 x 2040mm

Doors can be trimmed to accommodate non standard sizes. All doors are 35mm thick.

If a door is to be painted we can add timber to the sides, top and bottom of a door to increase its size.

Doors can be supplied unfinished in 'clear pine', antique stained, waxed or primed.

Glazing

The doors come with a number of pane, border and corner options enabling you to tailor your glazing requirements. A selection of standard glass packs, chosen from the range of glass, is available with these doors.

2 pane glazing options



Regent A



Blue Gothic



Amber Gothic



Fleur

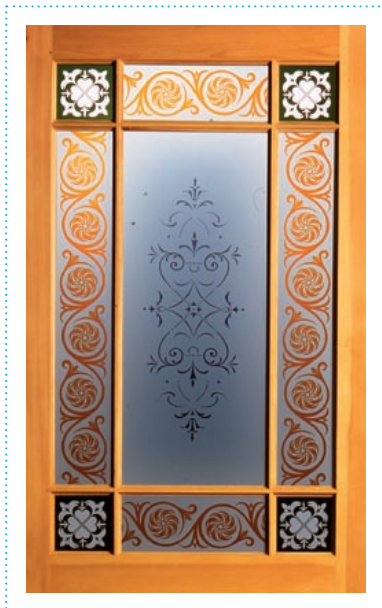


Double Fleur



Star

9 pane glazing options



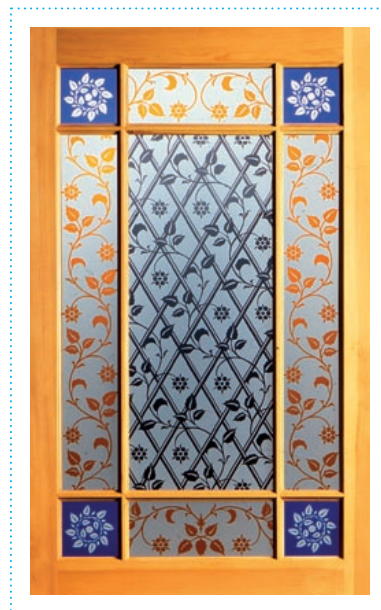
Option 1



Option 2



Option 3



Option 4

FAQ

Glazing

Etched and enamelled surfaces should face the inside of the building when glazed to protect the decorated surface from the elements. Glass subject to high levels of condensation e.g. in a bathroom, should have the decorative surface incorporated into the centre of the glass laminate to further protect the decorated surface. Please specify "internal laminate" when ordering, if this is required.

Once the glass is fitted, we recommend that any putty or glazing contamination is removed immediately and not permitted to dry on the glass, as this may leave a residue.

Safety glass should be fitted in all doors and glazed areas that are lower than 800mm from floor level. Glass panes less than 250mm wide may be fitted with 5mm or 7mm laminated glass.

We do not recommend our annealed glass be toughened which is why we offer all designs in a laminated safety glass option of either 5mm or 7mm.

Measuring for Glass

When measuring a tight size you must deduct 3mm, so as to ensure that the glass, once cut, will fit correctly. Remember to indicate width and height when ordering one of our non-symmetrical glass patterns so that the pattern is correctly cut. We always endeavour to centre the pattern in the glass pane and cut the glass so that the design flows through the space.

It is therefore useful to provide a layout where panes are positioned close to one another. If your glass is an unusual shape e.g. curved, again it is helpful to provide a template.

Measuring for Doors

Measure the actual size of the frame opening. Deduct 4mm from the width and 7mm from the height to arrive at the size of the door to be ordered.

Maintenance

To ensure that your glass continues to look its best for years to come, clean any finger-marks or grease regularly from the etch surface using standard glass cleaner.

Delivery

Most of our items are held in stock so that delivery can be achieved as soon as possible.

We aim to deliver glass within 10 days and doors within 3 weeks.

Delivery costs vary according to the amount of glass or doors ordered and the delivery address. Please call us for an exact quotation.

Samples

The colour reproduction in this brochure is not accurate, and therefore we recommend that you ask for sample before you purchase to ensure that you are happy with final product.

Glass samples are available on request. Please call us on 01242 228000 to arrange.

While we can supply you with glass directly, we also have over 300 stockists throughout the UK and Ireland. We will be happy to direct you to the one that is most convenient for you.



BARRONGLASS

www.barronglass.co.uk

The Grain Dryer , Gotherington Fields, Cheltenham
GL52 9SB Tel: 01242 228000
f: 01242226555 e: admin@barronglass.co.uk